



# Soft Play Building Project

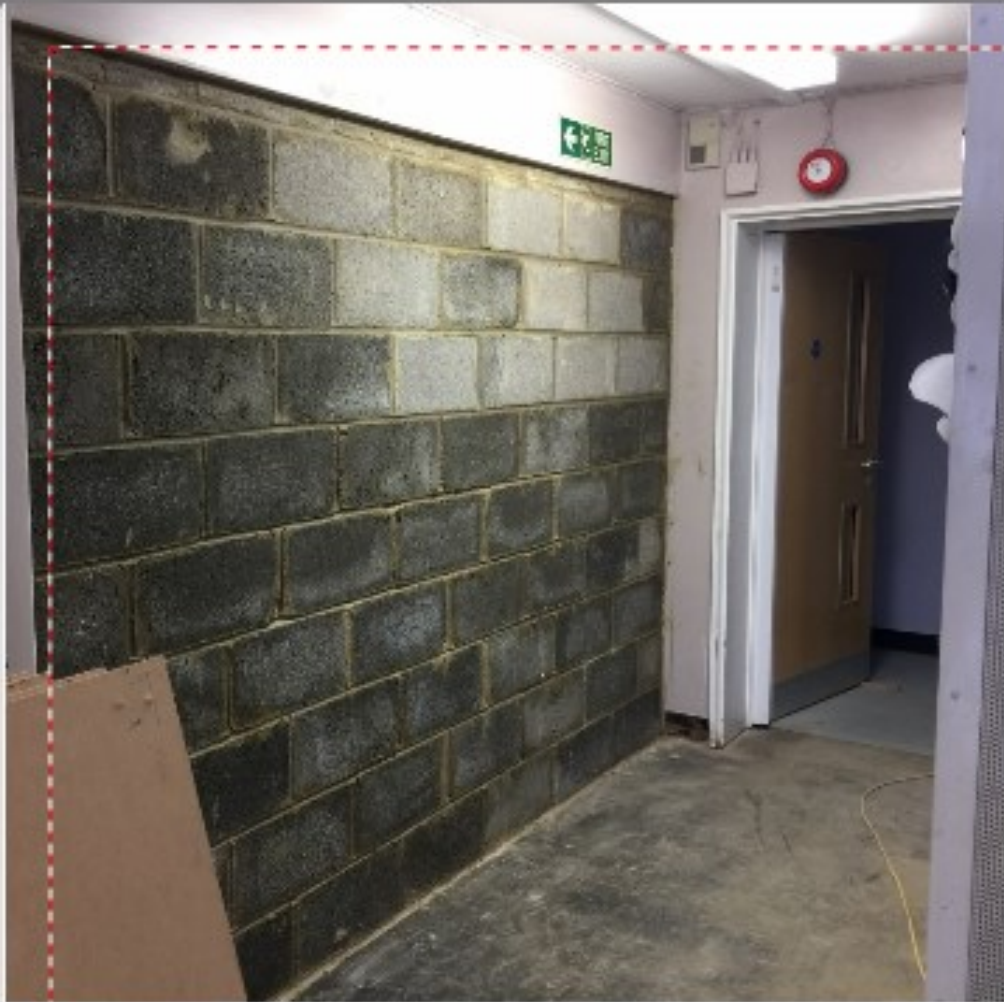
Thank you Jim for making  
our school a better place.



**This is a story of generosity,  
caring and giving on an  
unimaginable scale.**

## *The Beginning*

**Over a number of years, the school's very valued, but extremely dilapidated, soft play facilities fell into disrepair. The temporary modular building housing the soft play room equipment had been repaired and patched up over the thirty years that it had been standing in the secondary playground. It had unfortunately reached the end of its life. The soft play facility is an extremely popular resource, well loved by the children and an essential learning space that contributes so much to the children's physical, emotional and social development, as well as their wellbeing and self confidence in experimenting, exploring and trying out new activities. This space provided an effective and positive motivating factor in their communication, interaction and engagement in learning.**





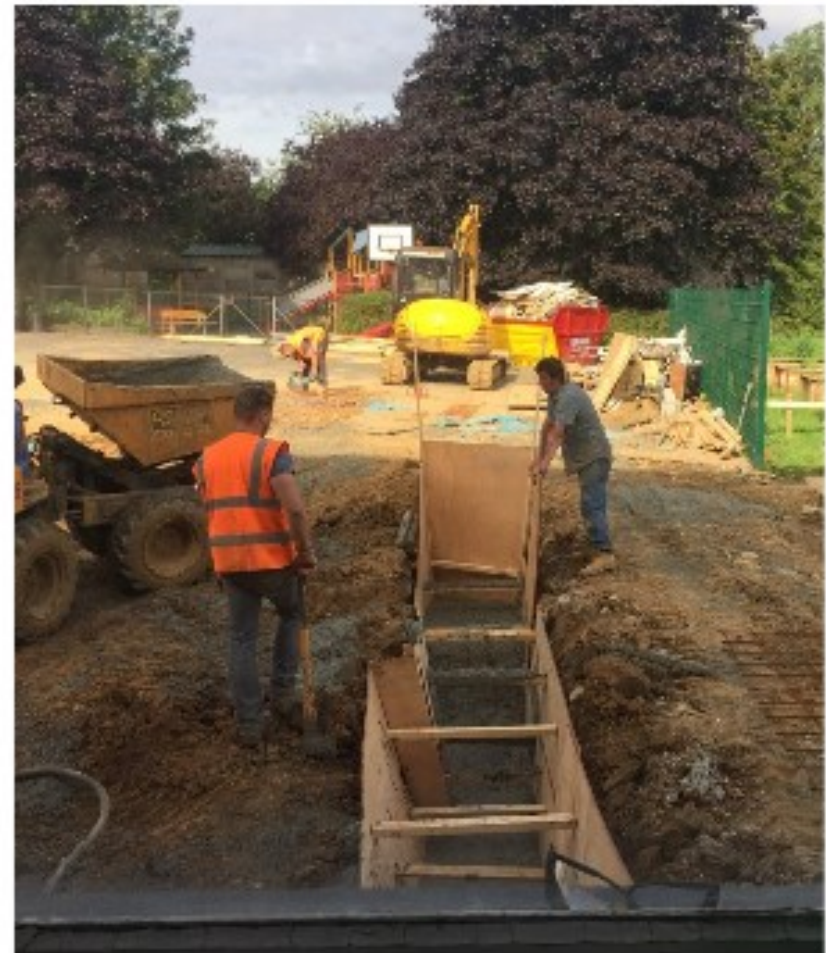
**Initial plans were to replace the old building on a similar footprint with another building of a similar size. Then Jim Taylor visited the school and inspired a much more ambitious project.**

**He set about raising funds to start the project off then commissioned and covered the cost for a professional fundraising video to be made to promote the cause. He then organised a Boxing Night at the Prince Regent Hotel raising over £20,000 in one night and a further one later in the project raising £17,000.**

# Early Planning and Tendering

A Project Manager was appointed and with Jim's guidance and support, plans were drawn up for a two storey extension to the side of the school to provide a larger soft play room, office/therapy space and two classroom spaces to the upper floor.

Jim had generously pledged from the start of his involvement, that he would provide materials for the construction of the extension building and it was originally anticipated that this would bring down the cost considerably.





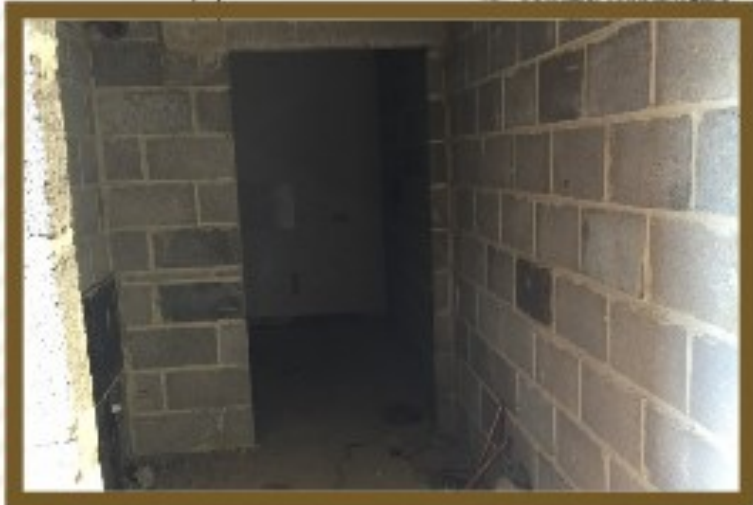


**When the work was sent out to tender and initial prices were received, the labour only quotes were much higher than expected.**

**Jim came to the rescue once again and pledged not only to provide the materials, but the labour too and when the tenders were re-issued, Jim's company, MixIt Concrete Ltd., tendered for the construction of the double story building for a grand total of £1,000. As they were not surprisingly the winning tender, MixIt Concrete Ltd. were appointed and set about planning the job with the Project Manager.**









## Fundraising

As there would be other costs to cover such as the electrical and plumbing works, internal fittings such as doors, windows, sanitary fixtures and fittings, alarm extensions, new soft play fit-out as well as the project management costs, the school applied for grant funding. The total needed for all of these additional costs was £295,000. The Parents and Friends Association (PFA) generously funded the initial project management/planning stage costs to enable the project to start. Other costs have been met from charitable grant funding secured by the PFA of £13,000 and local fundraising including Jim Taylor Boxing Events and Golf Days organised by Steve Eldridge, which totalled £71,000.

# Strong Foundations



**Construction work commenced on 25th July 2017. The builders worked relentlessly and selflessly throughout the summer holiday period, progressing to a stage where the building site was safe for the children to return to school after the summer holiday period in September. At the start of the works, Grant Beglan our PFA Patron, arranged for the asbestos to be removed from several areas of the school at no cost, for which we are extremely grateful.**





## Rain, Rain, Rain

**The old toilets were demolished and foundations were dug out.**

**Unfortunately the wet weather hindered progress at this point and the footings had to be dug out and immediately filled in with concrete in sections to stop the rain filling up the holes as soon as they were dug out!**

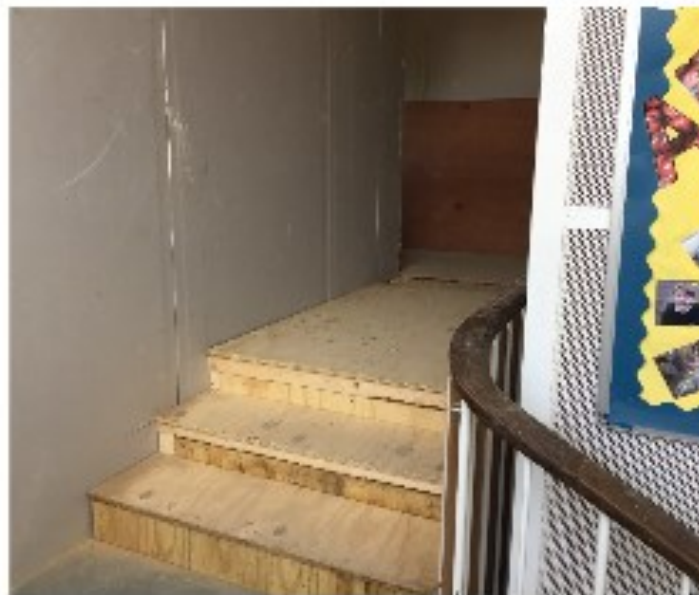


# Mud, Mud and More Mud!



*unconditional*

**GIVING**







# Steelwork



To the amazement of the project manager, the steel framework was constructed in one day, which he commented can take up to a whole week.







# Wall Construction





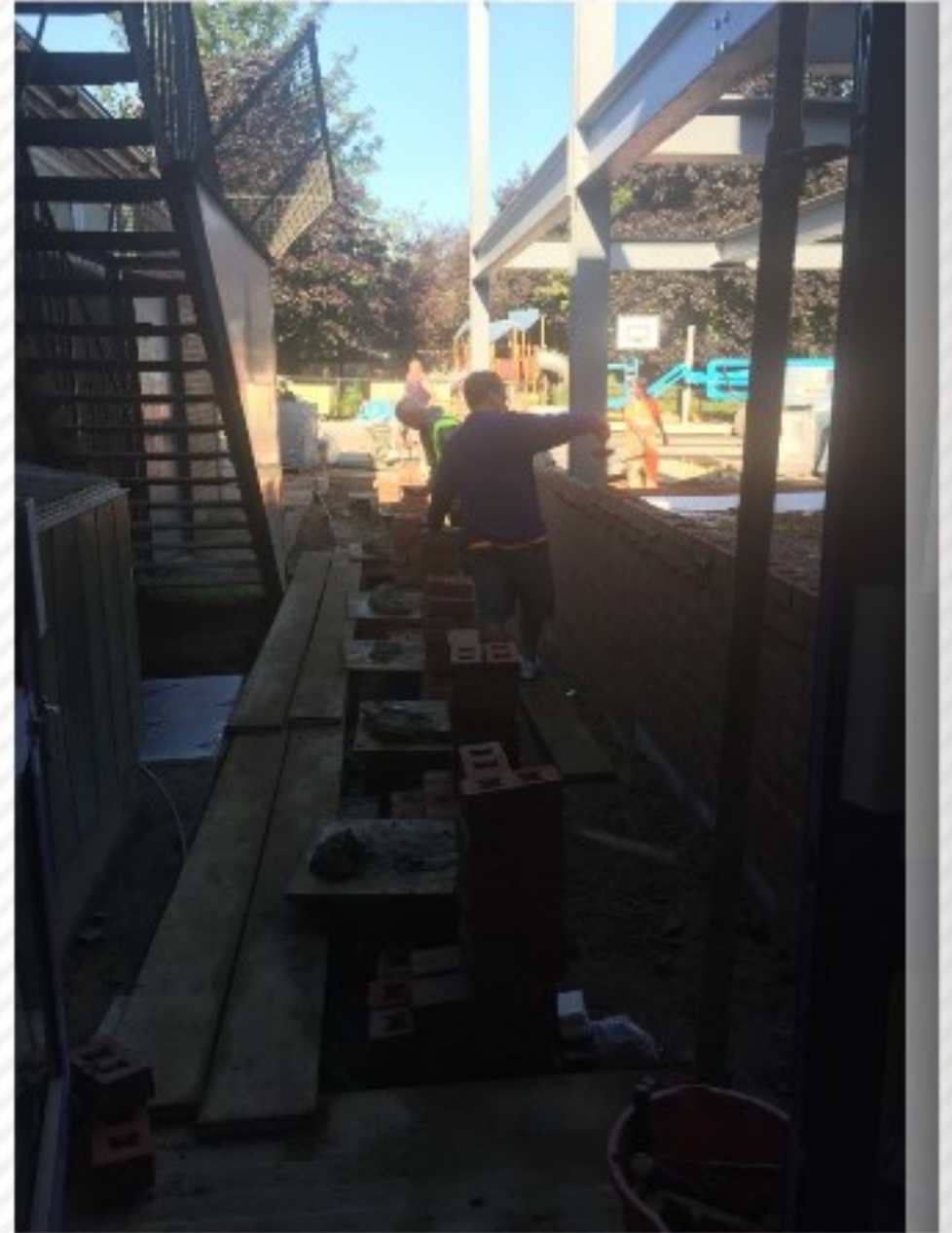
# Health and Safety



The initial plumbing and electrical works were completed as far as possible during the holidays. By the time the children and staff returned to school, the builders had completely boarded any access to the site from the children's learning and playing areas to ensure their safety and wellbeing. The builders attention and commitment to health and safety and safeguarding was exemplary to the level that they began to lecture the school on health and safety!



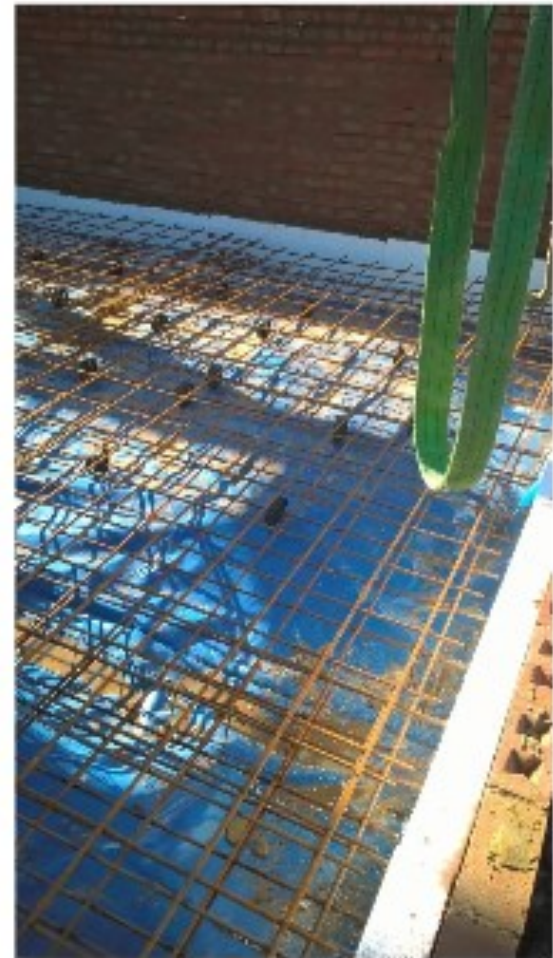
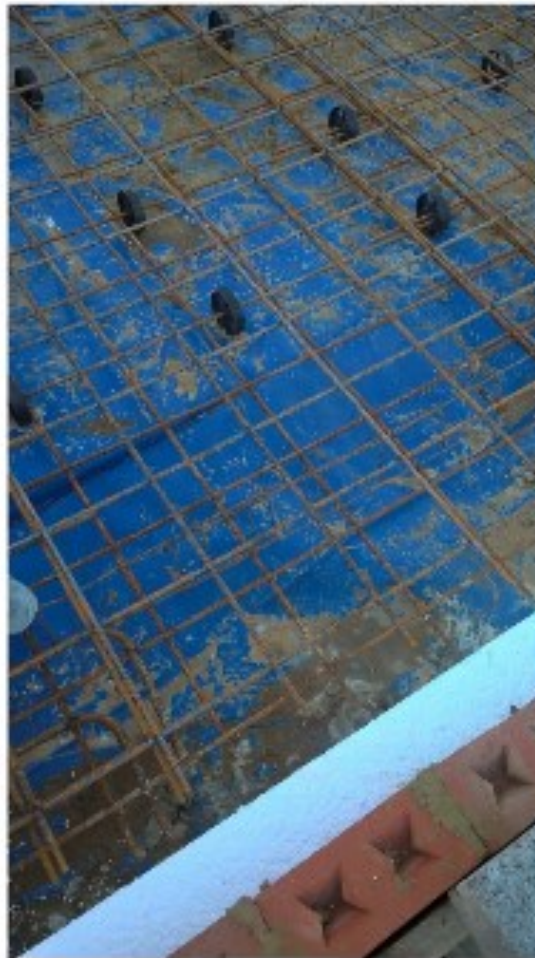






**At the end of the summer the extension had lower floor external walls and the path to the emergency exit to the school had been repaired and re-laid. Internal walls had been demolished and rebuilt to create a large upper floor classroom and two storage rooms. All walls had been re-plastered and painted. New toilets had been installed and a remodelled staircase and lobby area had been created.**

# Flooring Construction

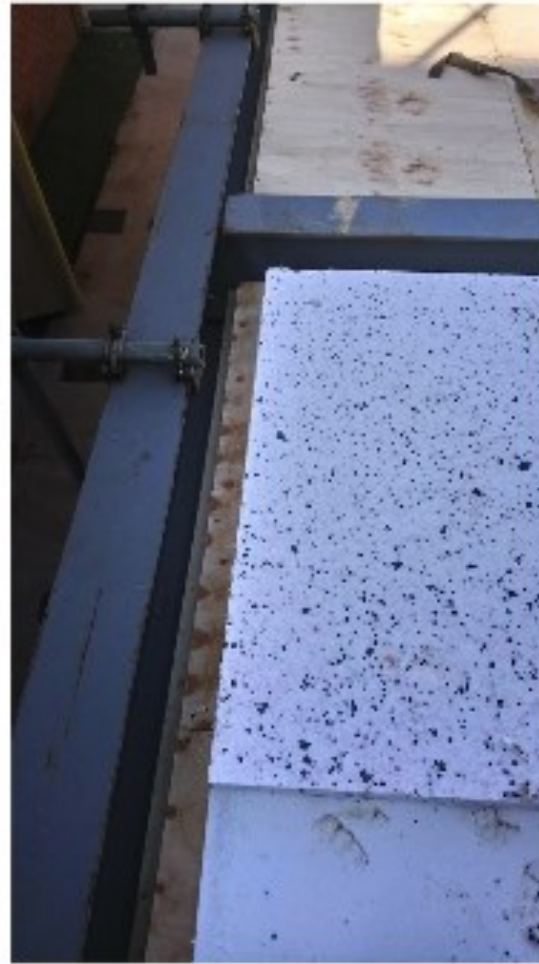
























































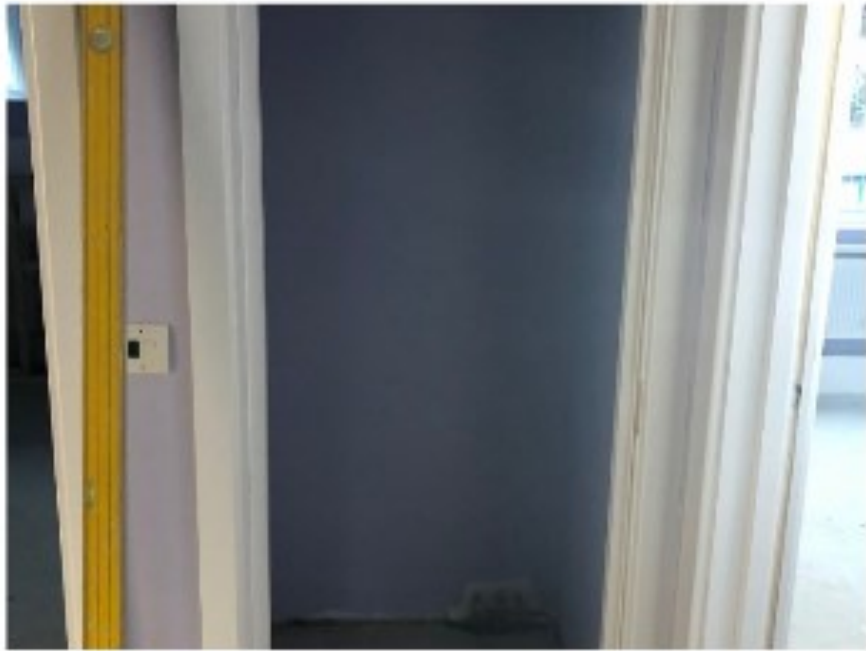
# Windows and Doors





Internal walls were built and plastered. Flooring, a roof and windows were completed. Network cabling was installed and internal electrical work progressed well. Further internal works then continued with suspended ceilings installed and decorating completed.







Bill was an amazing foreman and went above and beyond all of the time in support of the school.











# The Soft Play Room



The completion/handover date was on 26th March 2018, with the soft play equipment installed during the Easter holidays.

# The Natural Environment Teaching (NET) Room



The NET room includes an interactive OmiVista Projector where children's movements interact with the projected image using sound and visual effects. The room also includes an infinity tunnel with mirrors and interactive lighting.





Tweet



Corbets Tey School  
@CorbetsTeySch

Building work has begun to create a new soft play room, new toilets and classroom spaces...thanks to Jim Taylor @mixitconcrete



08/08/2017, 00:34 from Romford, London

View Tweet activity

4 Likes

Add another Tweet



vodafone UK 18:12 61%

**Tweet**

 **Corbets Tey School**  
@CorbetsTeySch

So exciting to see the frame of our new soft play building being assembled. The [@mixitconcrete](#) crew work so hard, including weekends for us.



26/08/2017, 16:01 from Romford, London

Add another Tweet



vodafone UK 18:12 61%

**Tweet**

 **Corbets Tey School**  
@CorbetsTeySch

The steel frames for our new soft play extension arrived today. Watch this space for updates and photos of the construction. [@mixitconcrete](#)



25/08/2017, 19:47 from Romford, London

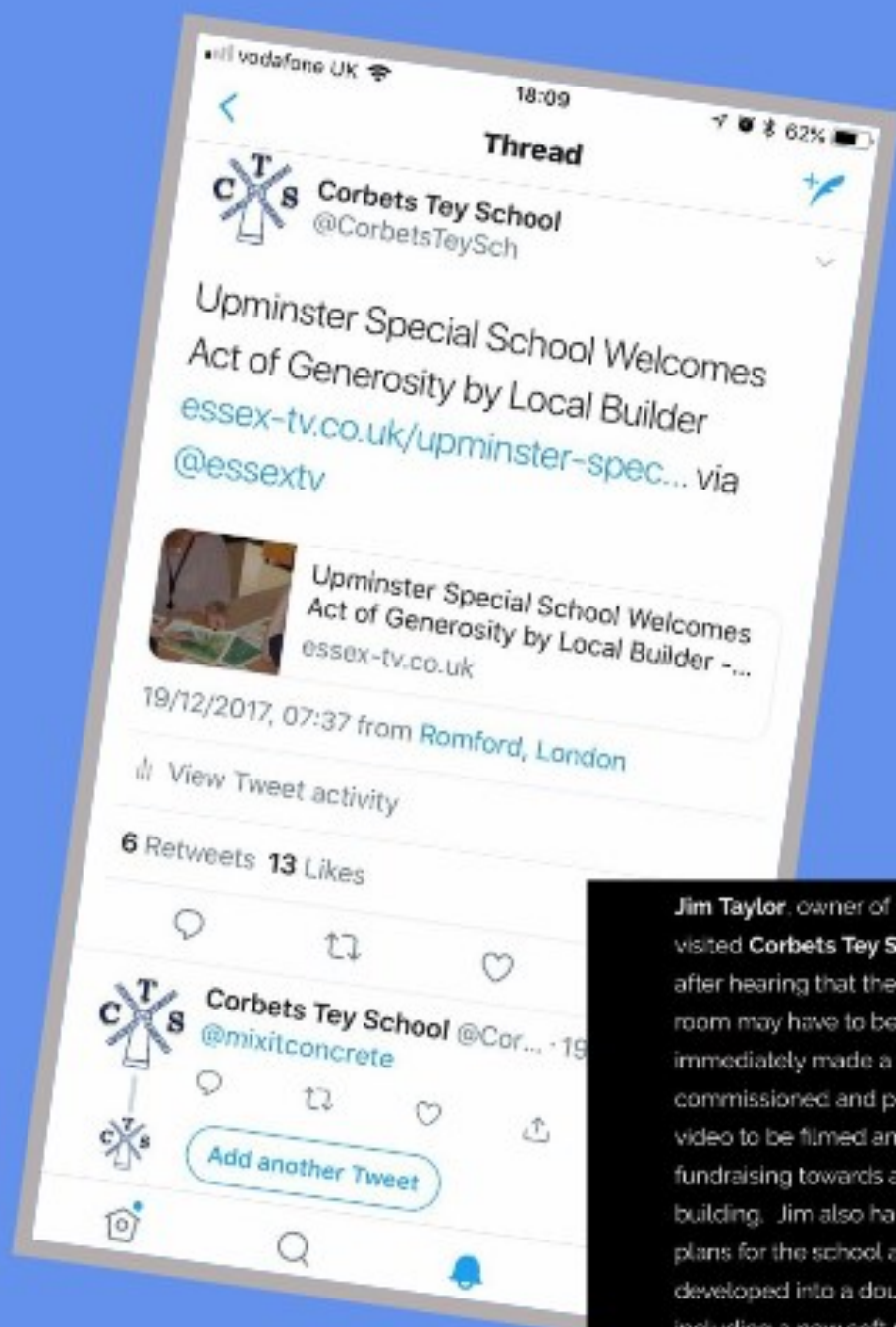
[View Tweet activity](#)

**4 Likes**

Add another Tweet





Jim Taylor, owner of Mixit Concrete Ltd, visited **Corbets Tey School** in 2016 and after hearing that their dilapidated soft play room may have to be demolished immediately made a decision to help. He commissioned and paid for a fundraising video to be filmed and pledged to support fundraising towards a replacement building. Jim also had more ambitious plans for the school and the project quickly developed into a double storey extension including a new soft play area, therapy rooms, new toilet facilities and two classroom spaces.

Corbets Tey School caters for pupils with a wide range of complex and severe learning, physical and communication needs. Over 50% of pupils have Autism and therefore find it difficult to interact and communicate with others. There are also a growing number of pupils with physical difficulties in the school.

Susan Cumbers, Business Manager, explains, "Many of our children have autism and communication difficulties so facilities

## UPMINSTER SPECIAL SCHOOL WELCOMES ACT OF GENEROSITY BY LOCAL BUILDER



A local builder has made an astonishing charitable commitment to build a double storey extension for £1,000 to help a special school in Upminster continue to support their pupils' physical, social emotional and learning needs.

Susan Cumbers, Business Manager, explains, "Many of our children have autism and communication difficulties so facilities that encourage interaction and communication with their peers or adults through play is so important, but sometimes impossible to fund from within the school budget."

So far Jim has held two fundraising Boxing Nights raising over £40,000 and will have donated a further £200,000 in materials and labour costs to build the extension.

Work continues at an astonishing pace and the facility is expected to be complete by February 2018.

### Share this:





Tweet



Corbets Tey School  
@CorbetsTeySch

We have painted internal walls and brickwork! An amazing amount of work. Thank you so much Jim, Bill and all of the team @mixitconcrete



01/09/2017, 18:45 from Romford, London

View Tweet activity

1 Retweet 9 Likes

Add another Tweet



Corbets Tey School  
@CorbetsTeySch

Building work is going well. @mixitconcrete are transforming our school to create amazing learning spaces for children with disabilities.



16/08/2017, 18:41 from Romford, London

View Tweet activity

1 Retweet 7 Likes

Add another Tweet



Tweet



You Retweeted



MixIt  
@mixitconcrete

Work started for @CorbetsTeySch in building a soft play area for the children. Looking for donations for 9,000 off-red bricks #concrete #job



4/08/2017, 10:35

Tweet your reply



Corbets Tey School  
@CorbetsTeySch

Our brand new soft play room is taking shape! We are so excited and grateful to our amazing benefactors. Especially Jim Taylor from @mixitconcrete



28/03/2018, 21:15

View Tweet activity

5 Retweets 19 Likes

Add another Tweet



# Feedback from Staff

I wonder if you could pass this message onto Jim Taylor and Friends who funded and built our Wonderful new soft play room. I wanted to say thank you so much for your kind donation and time in creating a fantastic space for our pupils in class to enjoy. We had the pleasure of using it on our first day back after Easter....it was absolutely great. The pupils in class particularly enjoyed the ball funnel thing! Well actually they enjoyed all of the soft play area. What a fab space for our children to enjoy...whether it be racing around, playing games or just letting off steam! Its exactly what the children love most.....having fun...including the adults too. Mulberry Class pupils and staff love our soft play sessions. And could I add that it was lovely to see our less physically able child come out of his wheelchair and have freedom to move around in a safe, bright and fun environment...what a joy to watch. On behalf of Mulberry Class ... thank you Jim.

Maple class absolutely love the new soft play room, especially the ball pit area with the ball shooter and the sensory lights under the slide. We had an amazing communication session in there with no behaviour from pupils which was lovely to see. We are very excited for our weekly slot! Thank you to the builders and to Jim.

The children absolutely love it. The space is large enough for pupils to develop gross motor skills but lots of safe spaces for pupils who prefer smaller cubby holes. We are now able to use the soft play more effectively in developing communication as they are so motivated by the area. Thank you!

PRECIOUS  
*experiences*

Our pupils are absolutely loving the new soft play. There is something for everyone, 2 pupils in particular are big fans of the ball pool shower and will sit there for a whole session posting the balls and watching them drop. The infinity tunnel is also a bit hit with the pupils that want some peace and quiet away from the others. It has been really nice watching the enjoyment and smiles on their faces as they explore this new environment.

Pear Class love it!!! Its so much better (and more accessible) than the old one and there's something for everyone! The slide/ramp, trampoline and ball pit a particular favourite of Pear Class! Thank you very much to Jim for creating such a lovely interactive area for all the children to use no matter what their needs! :)

*The pupils in Willow really enjoyed their first session in soft play yesterday. It is a lovely bright, spacious, fun filled room. Many thanks to Jim and his team.*

Elm class really enjoys using new soft play. All children were really drawn into the ball machine. They are working at the moment on understanding cause and effect - putting the balls up the tube. They are aware that ball will be falling down and really enjoy this experience. Some children explored the infinity tunnel and worked on pressing switches to change the colour of the light. The new equipment encouraged less physical children to challenge themselves. One boy in particular, that is not very motivated by physical activities, really challenged himself walking up and sliding down, climbing up on top of the infinity tunnel, jumping on the trampoline and balancing on the log. All children noticed that it was different and loved exploring our new equipment. Thanks a lot for this amazing resource.

Although I have very little involvement with the soft play facility as my time is spent in the pool, I have made an effort to take a look and was amazed at this wonderful addition to our school. I would like to offer my thanks and appreciation of such generosity to enable a facility which I know will give our pupils much pleasure and expression of their sensory needs. With many thanks to Jim and all the people involved in the construction.

I have been to soft play with Peach Class and all of the children loved playing with all the aspects in the new amazing soft play!! Particularly the new ball pit and the sensory part as well with the lights inside under the slide! The children have loved the ball pit and they have loved jumping on the trampoline. The balancing beam has been aiding success towards children's targets as well. Thank you for the brilliant soft play, it's amazing and we're very grateful for this new safe and fun place for the pupils to learn and enjoy themselves.

The soft play and toilet area are amazing!! It gives our children so much freedom and joy; more than you know. The access to the toilets is wonderful and makes life so much better for both staff and children! Also having the new softplay brings more joy to our children; they all enter and leave the softplay room with a smile. I really hope you can see how grateful we all are. The softplay will be enjoyed by so many.

You are an angel Jim, giving us so much and many memories of happiness to come. Thank you for all your hard work and most of all love for our children and school.

The new soft play is fantastic. I have been lucky enough to see three different classes enjoying their time in there, Every child has found enjoyment out of something; whether they were jumping on the trampoline, playing chase up the stairs and down the slide, looking at themselves in the mirror or playing in the ball pool (I enjoy it too!)

It has given the more complex pupils a focused space to develop their communication and interaction skills. One child has responded particularly well, with data showing that when using the room her requests for interaction are at least double in frequency. It is a brilliant space that will continue to contribute to pupils' development. Thank you

I have to say the soft play has been an absolute joy for the children and staff alike in Ash class. The children were not able to access the old soft play and it really wasn't big enough or stimulating enough. Since the beginning of the build the children have been very interested in what has been going on and asking when it would be ready? The day we came back to school the children were so excited and asked to go in straight away. As we share swimming with Palm Class and this term it's their turn we decided to go for it as it wasn't booked out. The class were so excited and had no trouble taking off their shoes as there is so much space. It was lovely to see the whole class having so much fun. We do have children with mobility issues but they could all let themselves go in a safe, fun and free environment. It is interesting, stimulating and above all gives so much pleasure. It's also fab to have the toilets where they are as children can sometimes forget themselves when they are enjoying themselves, so it's up to us as their teachers to be one step ahead. Having the toilets where they are means that they are giving up the least amount of time possible, to use the toilet before going back and enjoying themselves.

**Orange Class had the pleasure of using the Soft Play room last week. All pupils were extremely engaged and explored the new space.**

**There are a range of pupil abilities in Orange class with children aged 14 -16. Some learners have higher sensory needs and are achieving the early stages of the Learning Pathways. These pupils learn best through a multisensory and an exploratory approach. There are also some learners who are beginning to focus on national curriculum targets who learn best through more academic, structured activities. Most would believe that the soft play room would be beneficial to the younger children, however with the different cohorts and abilities of pupils in Orange Class, the new soft play room proved to be equally as engaging, exciting and reinforcing to our older pupils.**

**It was wonderful to observe all the pupils enjoy the space and explore at their own level. One wonderful moment observed was two peers with different needs interacting with one another without adult prompting. They chased each other and enjoyed running together in the large space.**

**The soft play room looks amazing and we are grateful to have a wonderful space which is also suited to our older and complex pupils, to learn, explore and self-regulate.**

Oak Class have used the new soft play twice and both times it has been amazing to see the excitement displayed by the children. The new areas to explore have already seen an increase in language, communication and interaction.

A new space was greatly needed and this one definitely exceeds expectations. Oak

Class would like to say a massive thank you to everyone who dedicated time and resources. A few of the Oak

Class children have been requesting 'new soft play', Thank you!

The kids love the balancing beam, finding it exciting to walk across. They love the anticipation of the balls falling on them while in the ball pit. They love hiding in the ball pit now that it's deep enough. The trampoline is a great idea to have in a soft play room. They like the fact that there is more space to walk, run and play in.



# And Thank You from the Children...

2/13/11

1st 9/10

Dear Jim,  
 Thank you so much for  
 the Soft Play also  
 the Ball Pit and the  
 Ball Shower. I like  
 the Ball Pit because  
 it has balls in it.  
 It makes me so happy.



Love Emily

Dear Jim  
 Thank you so much for building  
 The soft play.  
 I really like the ball pool because  
 its got balls in the pool.  
 I really like the ball shower  
 because we put balls in.  
 I really like the slide because  
 it goes down being slow.  
 Love Maryah



Thank you Jim I like  
 the soft play  
 I like the ball pit  
 I like the ball shower  
 I like the slide  
 Love  
 PROMPTUS



DEAR JIM Thank you  
 for the soft play I love  
 the slide the slippery slide  
 the over one is cool  
 it smells like dust socks ewww!  
 but the soft play is awesome  
 I love the ball pit and  
 the ball shower  
 Love  
 PROMPTUS



Thank you Jim for the  
 new soft play  
 I like the ball pit  
 from Leah



2/13/11

Dear Jim  
 Thank you for making our  
 soft play I can now  
 run around with my teacher  
 we play I love Jim Pinyan  
 the ball pit and I go  
 under all the balls its  
 good fun  
 from Jessie

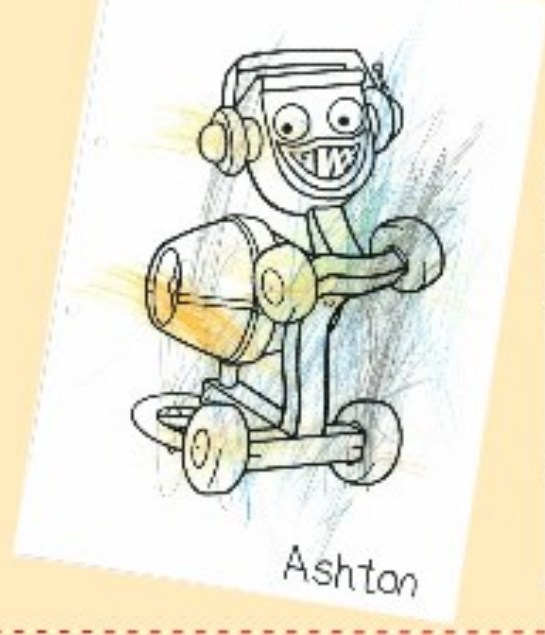


Thank  
You  
Jim...



Thank you

Dear Jim  
Thank you for  
inviting our class  
my favourite bit  
is the ball pond  
from Tom



Dear Jim

Thank you for  
inviting our class  
my favourite bit  
is the ball pond  
from Tom

# Thank You!

We cannot begin to express our thanks to Jim for his considerable financial generosity and to Bill, the foreman and all of the contractors and workmen on this project. They have been so committed and worked so hard to make this amazing project happen for our very special children, as well as other children in the community that will benefit from these facilities.

We are so grateful to Jim and all of our charitable grant funders; The London Marathon Charitable Trust, Act Foundation, Garfield Weston Foundation, The Wolfson Foundation, Baily Thomas Charitable Fund and the School Parents and Friends Association. We would like to thank everyone who has raised funds and/or contributed towards this project financially or through goods, services or positive thoughts.



# The Taylor Wing

Opened April 2018

In grateful appreciation to Jim Taylor of MixIt Concrete Ltd  
who built this soft play, learning and therapy facility  
through his amazing positivity, significant effort  
and overwhelming financial generosity

We also acknowledge the financial contributions of:

**LONDON MARATHON**  
CHARITABLE TRUST



Garfield Weston  
FOUNDATION

The Wolfson\*  
Foundation

The Act Foundation

Bally Thomas Charitable Fund

Parents and Friends Association of Corbets Tey School

